

HOAGLIN-ZENIA ELEMENTARY SCHOOL



GRADES K-8

Covelo-Mina Road Zenia, CA 95495
Phone: (707) 923-9670 Fax: (707) 923-4294
Web site: www.tcoe.trinity.k12.ca.us/~Zenia

Peggy Canale
Superintendent/Principal

Robin Drechsler
Teacher in Charge

2007-08 School Accountability Report Card

Published During the 2008-09 School Year

Principal's Message

The Hoaglin-Zenia Elementary School staff and community strive to work together to create programs that produce articulate, confident, and skilled students. Hoaglin-Zenia Elementary School is located in the Southern Trinity Joint Unified School District in the southwest corner of Trinity County. The school is one of four schools in the District, and serves 10 students in grades K-8, in a two-classroom, one teacher setting. We have an active pre-school playgroup that takes place in our Family Center, a separate building on the campus.

Parental Involvement

Parents are always welcome at the Hoaglin-Zenia Elementary School. The school has an active Site Council (SSC), and many parents volunteer their time, both in the classroom and with extracurricular activities. The school is a center for students, their parents, and the community, with additional services and opportunities provided through our Family Center.

For more information on how to become involved, please contact Roberta Drechsler, Principal/Teacher in Charge, at (707) 923-9670.

School Safety

The School Safety Plan, adopted by the District, was modified to fit the needs of our school. The plan covers all types of emergency situations. The School Site Council (SSC) reviews the plan annually.

Our school has a first aid kit, including emergency information on each student, and bus schedules that are updated yearly. Emergency drills are held on a regular basis.

On February 13, 2008, STJUSD's School Safety Plan was reviewed and updated by our School Site Council (SSC) and approved by our school board.

Professional Development

All District teachers are required to participate in five professional development days in addition to the required 180 instructional days. District teachers are also encouraged to participate in other professional development activities such as trainings and workshops. The District routinely pays for registration and travel costs as well as providing substitutes for participating teachers.

Recent areas of staff development include training and support for junior high and high school teachers to implement the Advancement Via Individual Determination (AVID) program, training and support for elementary teachers to improve mathematics instruction, and training for elementary teachers to implement the Step Up to Writing program.

Public Internet Access

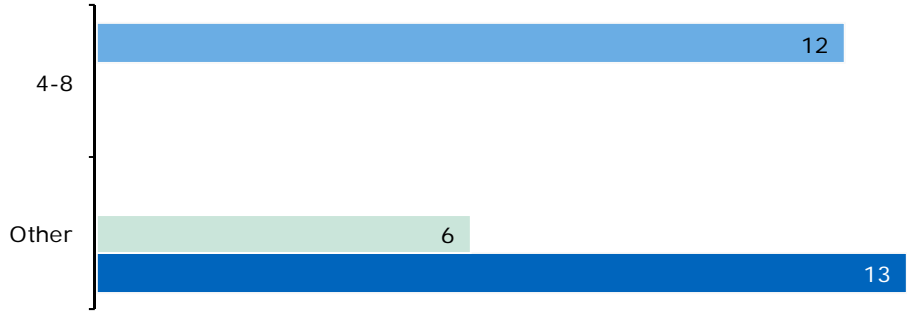
Internet access is available at public libraries and other locations that are publicly accessible (e.g., the California State Library). Access to the Internet at libraries and public locations is generally provided on a first-come, first-served basis. Other use restrictions include the hours of operation, the length of time that a workstation may be used (depending on availability), the types of software programs available on a workstation, and the ability to print documents.



Southern Trinity Joint Unified School District

680 Van Duzen Road
Bridgeville, CA 95526
Phone: (707) 574-6237
Fax: (707) 574-6538
www.tcoek12.org/~stjUSD/

"The Hoaglin-Zenia Elementary School staff and community strive to work together to create programs that produce articulate, confident, and skilled students."



Class Size

The bar graph displays the three-year data for average class size.

■ 05-06 □ 06-07 ■ 07-08

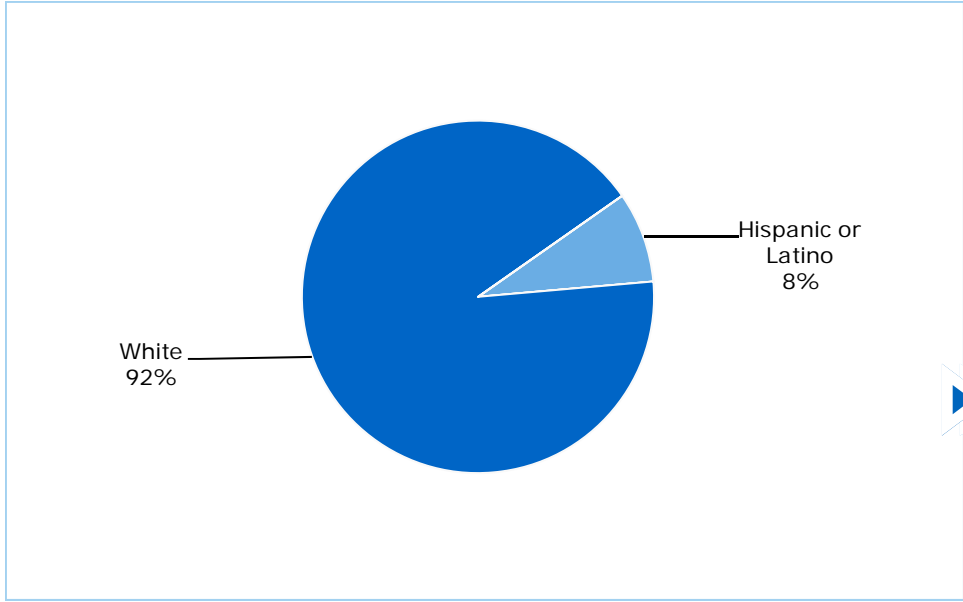
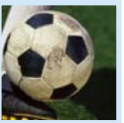
| Class Size Distribution — Number of Classrooms By Size | | | | | | | | | |
|--|-------|-------|-----|-------|-------|-----|-------|-------|-----|
| Grade | 05-06 | | | 06-07 | | | 07-08 | | |
| | 1-20 | 21-32 | 33+ | 1-20 | 21-32 | 33+ | 1-20 | 21-32 | 33+ |
| 4-8 | | | | | | | 1 | | |
| Other | 1 | | | 1 | | | | | |



Suspensions and Expulsions

The table shows the rate of suspensions and expulsions (the total number of incidents divided by the school's total enrollment) for the most recent three-year period.

| Suspension and Expulsion Rates | | | | | | |
|--------------------------------|------------------|-------|-------|-----------------------|-------|-------|
| | Hoaglin-Zenia ES | | | Southern Trinity JUSD | | |
| | 05-06 | 06-07 | 07-08 | 05-06 | 06-07 | 07-08 |
| Suspension Rate | 0.000 | 0.000 | 0.000 | 0.016 | 0.054 | 0.057 |
| Expulsion Rate | 0.000 | 0.000 | 0.000 | 0.000 | 0.000 | 0.000 |



Enrollment and Demographics

The total enrollment was 12 students for the 2007-08 school year.





School Facility Good Repair Status

The table shows the results of the school's most recently completed inspection, using the Facility Inspection Tool (FIT) or equivalent school form. This inspection determines the school facility's good repair status.

| School Facility Conditions and Improvements | | | | |
|---|---------------|------|------|------|
| Item Inspected | Repair Status | | | |
| | Good | Fair | Poor | |
| Gas Leaks | ✓ | | | |
| Mechanical Systems | ✓ | | | |
| Windows/Doors/Gates (interior and exterior) | ✓ | | | |
| Interior Surfaces (walls, floors, and ceilings) | ✓ | | | |
| Hazardous Materials (interior and exterior) | ✓ | | | |
| Structural Damage | ✓ | | | |
| Fire Safety | ✓ | | | |
| Electrical (interior and exterior) | ✓ | | | |
| Pest/Vermin Infestation | ✓ | | | |
| Drinking Fountains (inside and outside) | ✓ | | | |
| Restrooms | ✓ | | | |
| Sewer | ✓ | | | |
| Playground/School Grounds | ✓ | | | |
| Roofs | ✓ | | | |
| Overall Cleanliness | ✓ | | | |
| Overall Summary of Facility Condition | | | | |
| | Exemplary | Good | Fair | Poor |
| Overall Summary | | ✓ | | |

Note: The most recent school site inspection occurred on December 5, 2008, and the inspection form was most recently completed on December 5, 2008.

School Facilities

Our school was built in 1961, and extensively remodeled in 1997, with a permanent wall installed between the two classrooms plus the addition of a cafeteria. Each classroom is equipped with built-in computer counters. Our building and grounds are in excellent shape, and the staff keeps things clean and in working order. A portable building, which serves as our Family Center, was installed in 1994 and includes an office, and a multi-purpose area—used for playgroup and after-school activities. In 2002, a new floor was installed in the Family Center.

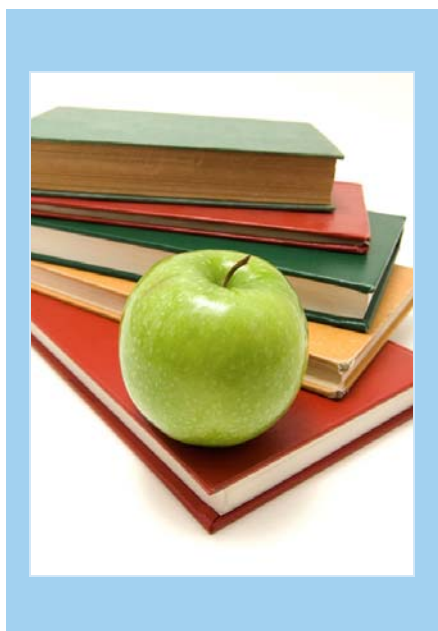
Hoaglin-Zenia school is cleaned daily. The janitorial staff is one person who cleans 1-2 hours each day after school hours. Students are continuously monitored inside the classroom as well as outside on the playground.

California Physical Fitness Test

Each spring, all students in grades 5, 7, and 9 are required to participate in the California Physical Fitness Test (PFT). The test measures six key fitness areas:

1. Aerobic Capacity
2. Body Composition
3. Abdominal Strength
4. Trunk Extension Strength
5. Upper Body Strength
6. Flexibility

To meet fitness standards, students must score in the Healthy Fitness Zone (HFZ) on all six fitness tests. To protect student privacy, scores are not shown when the number of students tested is 10 or less. Therefore, no data is available for Hoaglin-Zenia Elementary School. For more information on the California PFT, please visit www.cde.ca.gov/ta/tg/pf/.





Textbooks and Instructional Materials

| Textbooks and Instructional Materials List | | |
|--|--|---------|
| Subject | Textbook | Adopted |
| English-Language Arts | <i>Understanding Literature</i> | 2001 |
| English-Language Arts | <i>The American Tradition</i> | 2001 |
| English-Language Arts | <i>World Literature</i> | 2001 |
| Mathematics | Singapore Math K-5 | 2008 |
| Mathematics | CGP 6-8 | 2008 |
| Science | Houghton Mifflin K-5 | 2007 |
| Science | Prentice Hall | 2008 |
| History | McDougal Littell <i>U.S. History - The Americans</i> | 1999 |
| History | Glencoe <i>World Civilization - The Human Experience</i> | 1999 |
| Literature & Composition | <i>Literature and Composition</i> | 2003 |
| Reading | Houghton Mifflin <i>Reading</i> | 2003 |
| Reading | Prentice Hall <i>Reading</i> | 2003 |
| Social Studies | Houghton Mifflin | 2006 |
| Social Studies | Prentice Hall | 2006 |
| Geography | Glencoe <i>World Geography</i> | 2003 |
| Economics | Glencoe <i>Economics Principles and Practices</i> | 1999 |

Note: This data was most recently collected and verified in August 2008.

Academic Performance Index

The Academic Performance Index (API) is an annual measure of the academic performance and progress of schools in California. The API is a score on a scale of 200 to 1,000, with 800 set as the statewide target. Schools are ranked in ten categories of equal size from 1 (lowest) to 10 (highest). A similar schools API rank reflects how a school compares to 100 statistically matched "similar schools." The table shows the school's three-year data for API rank. Please note scores are not shown when the number of students tested is 10 or less, either because the number of students tested in this category is too small for statistical accuracy or to protect student privacy. Therefore, no API growth data is available for Hoaglin-Zenia Elementary School. For more detailed information, please visit www.cde.ca.gov/ta/ac/ap.

| API Ranks — Three Year Comparison | | | |
|-----------------------------------|-------|-------|-------|
| | 04-05 | 05-06 | 06-07 |
| Statewide API Rank | 6 | ◆ | ◆ |
| Similar Schools API Rank | ◆ | ◆ | ◆ |

◆ Information not available.

Testing Note: Assessment data are reported only for numerically significant groups. Data may not appear if ethnic/racial, socio-economically disadvantaged, or other groups (1) contain less than 100 students with valid test scores OR (2) comprise less than 15% of the school population tested and contain less than 50 students with valid scores.

Textbooks and Instructional Materials

The District's elementary schools are on the State text adoption cycle and select materials from the State-approved Standards-based list. The District's secondary schools select materials from a Board-approved list that meets State Content and Performance Standards.

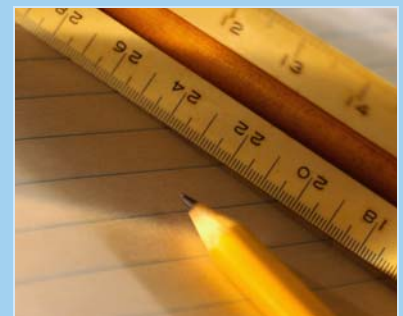
All students in visual and performing arts classes have access to the appropriate textbooks and instructional materials.

The district has affirmed that each pupil, including English Learners, have their own textbook to use in class and to take home.

Availability of Textbooks and Instructional Materials

The following lists the percentage of pupils who lack their own assigned textbook and instructional materials:

- Reading/Language Arts 0%
- Mathematics 0%
- Science 0%
- History-Social Science 0%
- Visual and Performing Arts 0%
- Foreign Language 0%
- Health 0%





California Standards Tests Results

The multiple-choice California Standards Tests (CST) are part of the Standardized Testing and Reporting (STAR) and are administered only to students in California public schools. These tests determine students' achievement of the California Academic Content Standards and provide feedback on their success given what they are expected to know in each grade level and subject.

| Percentage of Students Scoring At Proficient or Advanced Levels | | | | | | | | | |
|---|------------------|-------|-------|-----------------------|-------|-------|------------|-------|-------|
| | Hoaglin-Zenia ES | | | Southern Trinity JUSD | | | California | | |
| | 05-06 | 06-07 | 07-08 | 05-06 | 06-07 | 07-08 | 05-06 | 06-07 | 07-08 |
| English-Language Arts | ❖ | ❖ | ❖ | 41% | 32% | 46% | 42% | 43% | 46% |
| Mathematics | ❖ | ❖ | ❖ | 30% | 29% | 32% | 40% | 40% | 43% |
| Science | ❖ | ❖ | ❖ | 53% | 35% | 32% | 35% | 38% | 46% |
| History-Social Science | ❖ | ❖ | ❖ | 32% | 16% | 24% | 33% | 33% | 36% |

❖ Scores are not shown when the number of students tested is 10 or less, either because the number of students tested in this category is too small for statistical accuracy or to protect student privacy.

Adequate Yearly Progress

NCLB requires that all schools and districts meet Adequate Yearly Progress (AYP) requirements. To meet these standards, California public schools and districts must meet or exceed criteria in four target areas:

1. Participation rate on statewide assessments
2. Percent of students scoring proficient on statewide assessments
3. API scores
4. Graduation rate for high schools

The table displays whether or not the school made AYP overall and met each of the AYP criteria for 2007-08. For a detailed report on AYP, please visit www.cde.ca.gov/ta/ac/ay/.

| Adequate Yearly Progress Criteria | | | | |
|-----------------------------------|-----------------------|-------------|-----------------------|-------------|
| | Hoaglin-Zenia ES | | Southern Trinity JUSD | |
| Met Overall AYP | Yes | | Yes | |
| AYP Criteria | English-Language Arts | Mathematics | English-Language Arts | Mathematics |
| Participation Rate | Yes | Yes | Yes | Yes |
| Percent Proficient | Yes | Yes | Yes | Yes |
| API | Yes | | Yes | |
| Graduation Rate | ❖ | | Yes | |

❖ Not applicable. The graduation rate for AYP criteria applies to high schools.

California Standards Tests

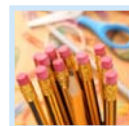
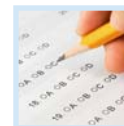
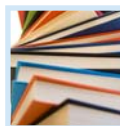
For the 2008 STAR exam, students in grades 2-11 took an English-language arts and mathematics test. Students in grades 4 and 7 also participated in an essay writing test. History-social science tests were given to students in grades 8 and 11, and students in grades 5, 8, and 10 took a science test. Students in grades 9-11 were also able to take end-of-course tests in science and history-social science if they were enrolled in the corresponding courses.

Because tests are meant to measure how well students achieve standards rather than how well they do compared to other students, the results are reported as performance levels. The five performance levels are:

- **Advanced** (*exceeds State Standards*)
- **Proficient** (*meets Standards*)
- **Basic**
- **Below basic**
- **Far below basic**

Students scoring at the Proficient or Advanced level meet State Standards in that content area.

The table shows the percentage of students that scored at Proficient or Advanced levels in English-language arts, mathematics, science, and history-social science. Please note scores are not shown when the number of students tested is 10 or less, either because the number of students tested in this category is too small for statistical accuracy or to protect student privacy. Therefore, no data is available for Hoaglin-Zenia Elementary School. For a complete report on all groups and their scores by grade level, please visit <http://star.cde.ca.gov/>.





Teacher Qualifications

| Teacher Credential Information | | | | |
|---|-----------------------|------------------|-------|-------|
| | Southern Trinity JUSD | Hoaglin-Zenia ES | | |
| Teachers | 07-08 | 05-06 | 06-07 | 07-08 |
| With Full Credential | 13 | 1 | 1 | 1 |
| Without Full Credential | 0 | 0 | 0 | 0 |
| Teaching Outside Subject Area of Competence | | 0 | 0 | 0 |



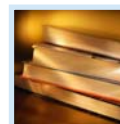
Teacher Qualifications

The table shows information about teacher credentials and teacher qualifications. More information can be found by visiting <http://data1.cde.ca.gov/dataquest/>.

Teacher Misassignments and Vacant Teacher Positions

The table displays the number of teacher misassignments (teachers assigned without proper legal authorization) and the number of vacant teacher positions (not filled by a single designated teacher assigned to teach the entire course at the beginning of the school year or semester). Please note: Total teacher misassignments includes the number of misassignments of teachers of English Learners.

| Teacher Misassignments and Vacant Teacher Positions | | | |
|---|------------------|-------|-------|
| | Hoaglin-Zenia ES | | |
| | 06-07 | 07-08 | 08-09 |
| Teacher Misassignments of English Learners | 0 | 0 | 0 |
| Total Teacher Misassignments | 0 | 0 | 0 |
| Vacant Teacher Positions | 0 | 0 | 0 |



No Child Left Behind Compliant Teachers

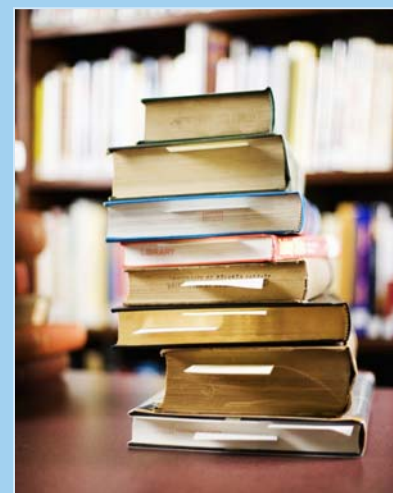
No Child Left Behind (NCLB) requires that all teachers of core academic subject areas be "highly qualified." In general, for a teacher to be considered highly qualified, they must have a bachelor's degree, an appropriate California teaching credential, and have demonstrated competence for each core subject he or she teaches. The table displays data regarding NCLB compliant teachers from the 2007-08 school year. For more information on teacher qualifications related to NCLB, please visit www.cde.ca.gov/nclb/sr/tq.

| Core Academic Courses Taught by NCLB Compliant Teachers | | |
|---|--|--|
| | % of Classes Taught by NCLB Compliant Teachers | % of Classes Taught by Non-NCLB Compliant Teachers |
| Hoaglin-Zenia ES | 100.0% | 0.0% |
| All Schools in District | 86.2% | 13.8% |
| High-Poverty Schools in District | 75.0% | 25.0% |
| Low-Poverty Schools in District | ◇ | ◇ |

◇ Information not available.

Academic Counselors

| Number of Academic Counselors (FTE) | Ratio of Students Per Academic Counselor |
|-------------------------------------|--|
| 0.0 | 0.0 |



School Support Staff

The following is a list of the support staff at the school and their full-time equivalent (FTE):

- Library Media Teacher (Librarian) 0.0
- Library Media Services Staff (paraprofessional) 1.0
- Psychologist 0.1
- Social Worker 0.0
- Nurse 0.1
- Speech/Language/Hearing Specialist 0.1
- Resource Specialist (non-teaching) 0.0
- Other 0.0



Federal Intervention Program

Schools that receive Title I funding can enter Program Improvement (PI) if they don't reach AYP over two consecutive years in the same content area (English-language arts or mathematics) or on the same indicator (API or graduation rate). With each additional year that they don't meet AYP, they advance to the next level of intervention. The table displays the 2008-09 Program Improvement status for the school and district. For more information, please visit www.cde.ca.gov/ta/ac/ay.

| Federal Intervention Program | | |
|--|------------------|-----------------------|
| | Hoaglin-Zenia ES | Southern Trinity JUSD |
| Program Improvement Status | Not In PI | Not In PI |
| First Year of Program Improvement | ✧ | ✧ |
| Year in Program Improvement | ✧ | ✧ |
| Number of Schools Identified for Program Improvement | 0 | |
| Percent of Schools Identified for Program Improvement | 0.0% | |

✧ Not applicable.

Financial Information

The data displayed is from the 2006-07 school year because the most current fiscal information available provided by the state is always two years behind the current school year, and one year behind most other data included in this report.

| District Salary Information — Does not include benefits | | |
|---|-----------------------|------------------------|
| Range | Southern Trinity JUSD | Similar Sized District |
| Beginning Teacher Salary | \$28,906 | \$36,658 |
| Mid-Range Teacher Salary | \$50,899 | \$53,646 |
| Highest Teacher Salary | \$59,332 | \$69,160 |
| Average Principal Salary (Elementary School) | ✕ | \$85,019 |
| Average Principal Salary (Middle School) | ✕ | \$85,660 |
| Average Principal Salary (High School) | ✕ | \$91,134 |
| Superintendent Salary | \$72,102 | \$110,844 |
| % of Budget for Teacher Salaries | 25.1% | 35.2% |
| % of Budget for Administrative Salaries | 6.1% | 6.4% |

| Financial Data | | | | |
|---|------------------------------|--|--|------------------------|
| | Total Expenditures Per Pupil | Expenditures Per Pupil From Restricted Sources | Expenditures Per Pupil From Unrestricted Sources | Average Teacher Salary |
| Hoaglin-Zenia ES | \$15,120 | \$7,895 | \$7,225 | \$53,843 |
| Southern Trinity JUSD | | | \$4,656 | \$47,153 |
| California | | | \$5,300 | \$54,955 |
| % Difference Between School and District | | | 35.6% | 12.4% |
| % Difference Between School and California | | | 26.6% | -2.1% |

✕ Data was not provided by California Department of Education (CDE).

Types of Services Funded

These programs and services are provided at the school either through categorical funds or other sources that support and assist students:

- Schoolwide Title I
- Gifted and Talented Education (GATE)
- Special Education
- Class Size Reduction
- Counseling
- School Nurse
- Inter Scholastic Athletics
- After-School Program



SARC: Data provided by the California Department of Education (CDE), school and the district office. For additional information on facts about California schools and districts, please visit DataQuest at <http://data1.cde.ca.gov/dataquest>. DataQuest is an online resource that provides reports for accountability, test data, enrollment, graduates, dropouts, course enrollments, staffing and data regarding English Learners.

All data accurate as of February 2009.